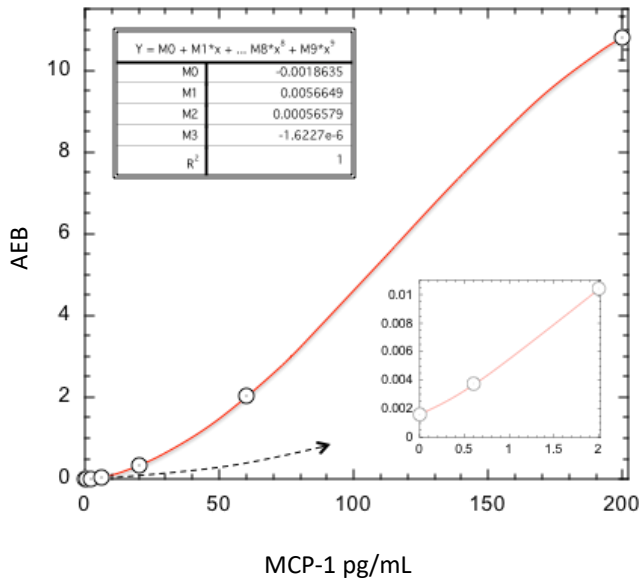


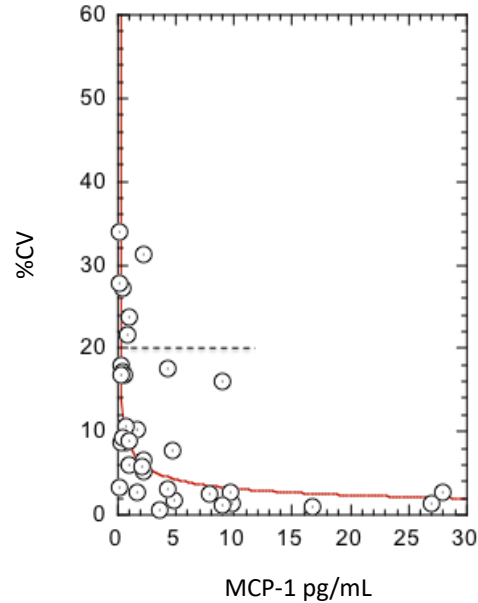
**Description**

Monocyte chemoattractant protein-1 (MCP-1) is a 13 kDa chemokine that regulates migration and infiltration of monocytes/macrophages. The idiopathic inflammatory myopathies, including dermatomyositis (DM), polymyositis and inclusion body myositis, are a group of autoimmune diseases characterized by chronic lymphocytic and macrophagic infiltration in muscle. MCP-1 is believed to play a major role in the recruitment of these cells, especially in DM. Plasma levels of MCP-1 have also been shown to be increased in patients with high viral load compared with HIV-seropositive subjects with undetectable plasma viral RNA and healthy controls.

**Calibration Curve:** Cubic fit parameters are depicted.



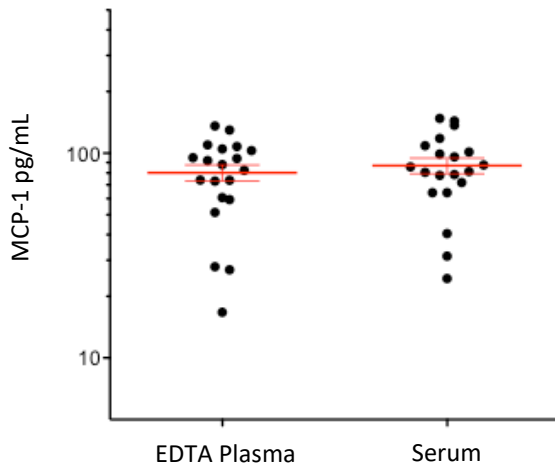
**Sample Dose CV Profile:** Triplicate measurements of diluted serum samples assayed over multiple runs (33 measurements). LLOQ determined as the concentration at which %CV exceeds 20% according to the power equation fit to the data.



<b>LLOQ</b>	<b>0.153 pg/mL</b>
<b>Dynamic range (serum and plasma)</b>	0–800 pg/mL
<b>Diluted Sample volume*</b>	100 μL per measurement
<b>Tests per kit</b>	96

\*See Kit Instruction for details

**Endogenous Sample Reading:** Healthy donor matched EDTA plasma (n=20) and serum (n=20) were measured. Error bars depict mean and SEM.



Sample Type	Median MCP-1 pg/mL
EDTA Plasma	85.3
Serum	83.6

**Precision:** Five samples consisting of two serum-based panels, one plasma-based panel, and two MCP-1 controls were assayed in replicates of three at two separate times per day for five days using a single stored calibration curve and a single lot of reagents. Analysis of variance (fully nested ANOVA) results are summarized in the following table.

Sample	Mean (pg/mL)	Within run CV	Between run CV	Between day CV
Control 1	57.7	3.3%	2.6%	0.0%
Control 2	335	3.5%	6.1%	0.0%
Panel 1	74.9	4.2%	4.0%	2.1%
Panel 2	83.5	2.9%	2.9%	4.9%
Panel 3	122	3.9%	4.6%	0.0%

**Spike and Recovery:** MCP-1 spiked into 4 serum and 4 plasma samples at 5 and 50 pg/mL.

**Dilution Linearity:** Plasma sample diluted 2x serially from MRD (4x) to 256x with Sample Diluent.

<b>Spike and Recovery (Serum/Plasma)</b>	<b>Mean = 87.6%</b> Range: 63.2–101%
<b>Dilution Linearity (256x)</b>	<b>Mean = 112%</b> Range: 97.5–125%