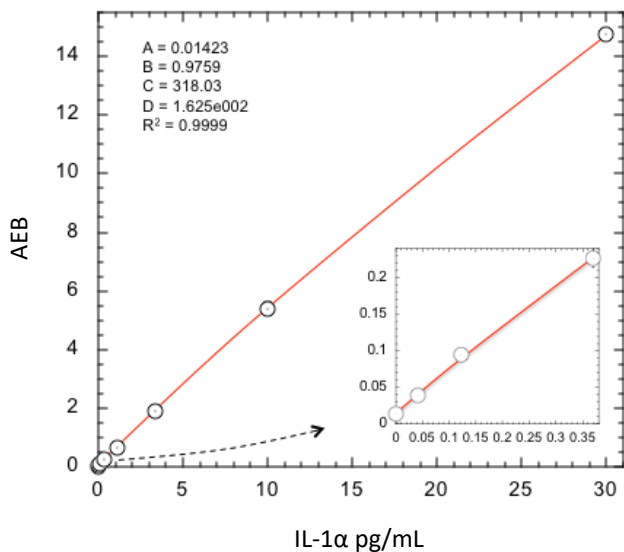


**Description**

Interleukin 1 alpha (IL-1α), a pro-inflammatory cytokine of 271 amino acids, is mainly produced by activated macrophages, as well as neutrophils, epithelial cells, and endothelial cells. Both the 31 kDa precursor form of IL-1α and its 18 kDa mature form are biologically active. The IL-1α precursor is released upon cell death as occurs in ischemic diseases such as myocardial infarction, stroke, acute renal failure, and tumor necrosis. IL-1α, mediator of inflammatory reactions, is produced in minute quantities and is active in very low concentrations in serum and plasma.

**Calibration Curve:** Four-parameter curve fit parameters are depicted.



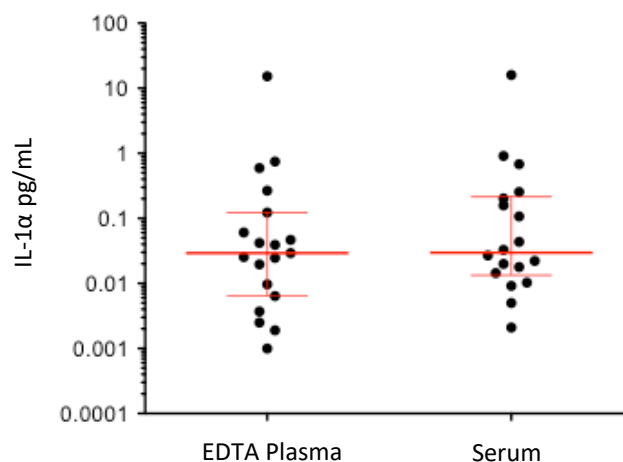
**Lower Limit of Quantification (LLOQ):** Triplicate measurements of serially diluted calibrator were read back on the calibration curve over 1 reagent lot across 3 instruments (5 runs total).

**Limit of Detection (LOD):** Calculated as 2.5 standard deviations from the mean of background signal read back on each calibration curve over 1 reagent lot across 3 instruments (5 runs total).

<b>LLOQ</b>	<b>0.010 pg/mL</b> pooled CV 13.2% mean recovery 104%
<b>LOD</b>	<b>0.004 pg/mL</b> range 0.002–0.008 pg/mL
<b>Dynamic range (serum and plasma)</b>	0–60 pg/mL
<b>Diluted Sample volume*</b>	100 μL per measurement
<b>Tests per kit</b>	192

\*See Kit Instruction for details

**Endogenous Sample Reading:** Healthy donor matched EDTA plasma (n=19) and serum (n=18) were measured. Error bars depict median with interquartile range.



Sample Type	Median IL-1α pg/mL
EDTA Plasma	0.0293
Serum	0.0291

**Precision:** Representative precision was estimated with repeated assay of serum panels using one instrument and one reagent lot. Within-run and between-run CVs across the instrument are depicted in the following table. Within-run CVs reflect average CVs across 5 experiments of 3 replicates each.

Sample	Mean (pg/mL)	Within run CV	Between run CV
Serum Panel 1	0.737	10.2%	21.5%
Serum Panel 2	6.36	6.1%	13.1%
Serum Panel 3	82.9	3.9%	14.0%
Serum Panel 4	29.7	4.7%	12.8%

**Spike and Recovery:** IL-1α spiked into 7 serum samples at 2 levels.

**Dilution Linearity:** Spiked and stimulated serum samples were diluted 2x serially from MRD (2x) to 128x with Sample Diluent.

<b>Spike and Recovery (Serum)</b>	<b>Mean = 73.0%</b> Range: 32.3–95.3%
<b>Dilution Linearity (128x)</b>	<b>Mean = 77.9%</b> Range: 59.9–86.7%